

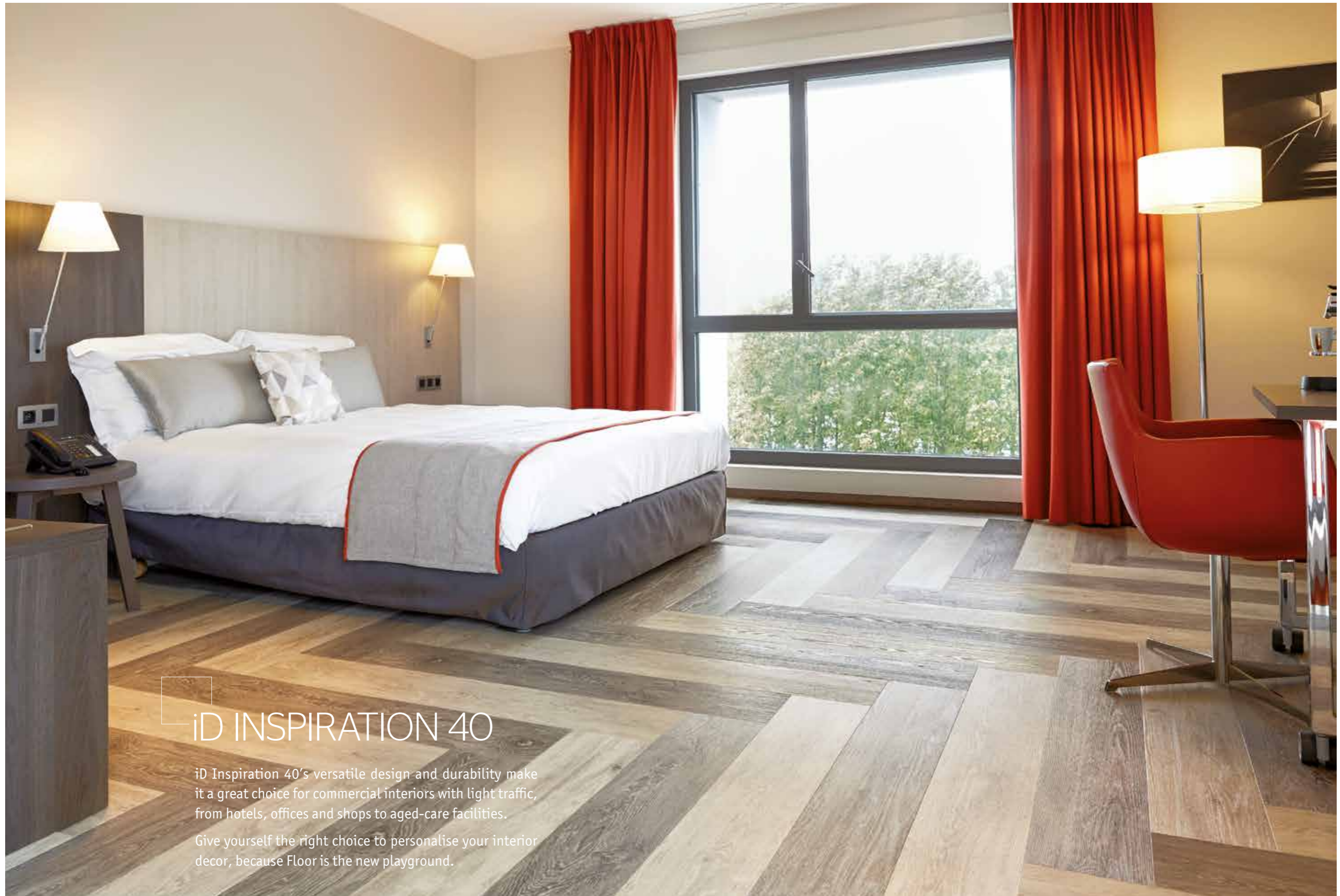
LUXURY  
VINYL  
TILES

# iD INSPIRATION 40

FLOOR  
IS THE NEW  
PLAYGROUND



THE ULTIMATE  
FLOORING EXPERIENCE



iD INSPIRATION 40

iD Inspiration 40's versatile design and durability make it a great choice for commercial interiors with light traffic, from hotels, offices and shops to aged-care facilities.

Give yourself the right choice to personalise your interior decor, because Floor is the new playground.

White Oak / Light - Grey

# iD INSPIRATION 40

## DESIGN YOUR OWN FLOOR DECOR

- Get creative with a carefully chosen range of 34 colours and patterns plus a variety of plank and tile formats.

## ACCESSORY PACKAGE

- Compact skirting with decorative film and PUR surface treatment to match all 34 designs.
- All accessories for user safety, stairs and transitions.

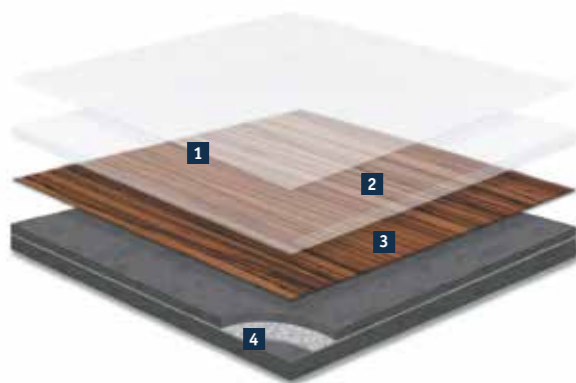
## HARD WEARING AND EASY CLEANING

- Treated with TopClean XP™ for a tougher surface and simpler care, reducing the need for water, energy and chemical detergents.

## A SUSTAINABLE SOLUTION

- Helps improve indoor air quality with VOC emissions below quantifiable levels, under 10µg/m<sup>3</sup> after 28 days.
- Uses phthalate-free technology based on alternative plasticizers.
- Made in Germany to benefit from our best-in-class industrial expertise.

## PRODUCT CONSTRUCTION



- 1 Topclean XP™ PUR reinforcement**  
for excellent resistance to abrasion, scuffs and scratches plus easy, low-cost maintenance
- 2 0.40mm pure PVC transparent anti-wear layer**  
for an exceptionally hard-wearing and indentation-resistant surface
- 3 34 designs in high-definition print**  
for a higher quality, more natural look
- 4 Unique structure strengthened with non-woven glass fibre**  
for class-leading dimensional stability with superior performance against indentation and tearing



Polished Concrete / Light Grey - Medium Grey - Dark Grey

# iD INSPIRATION 40



**Antik Oak**  
Grege  
24260 134 20 x 122 cm  
LRV: 38.05%  
Skirting: 26640 383



**Antik Oak**  
White  
24260 133 20 x 122 cm  
LRV: 36.56%  
Skirting: 26640 382



**Antik Oak**  
Classical  
24260 135 20 x 122 cm  
LRV: 33.43%  
Skirting: 26640 384



**Antik Oak**  
Light Brown  
24260 132 20 x 122 cm  
LRV: 29.93%  
Skirting: 26640 381



**Maple**  
Studio  
24261 143 16.66 x 100 cm  
LRV: 44.82%  
Skirting: 26640 393



**Modern Oak**  
Beige  
24260 145 20 x 122 cm  
LRV: 43.49%  
Skirting: 26640 395



**Modern Oak**  
Classical  
24260 146 20 x 122 cm  
LRV: 33.86%  
Skirting: 26640 396



**Modern Oak**  
White  
24260 144 20 x 122 cm  
LRV: 21.04%  
Skirting: 26640 394



**Antik Oak**  
Dark Brown  
24260 136 20 x 122 cm  
LRV: 12.48%  
Skirting: 26640 385



**Brushed Pine**  
White  
24260 016 20 x 122 cm  
LRV: 42.66%  
Skirting: 26640 266



**Brushed Pine**  
Natural Grey  
24260 137 20 x 122 cm  
LRV: 29.59%  
Skirting: 26640 387



**Brushed Pine**  
Light Brown  
24260 138 20 x 122 cm  
LRV: 28.41%  
Skirting: 26640 388



**Patina Ash**  
Beige  
24260 106 20 x 122 cm  
LRV: 43.21%  
Skirting: 26640 343



**Patina Ash**  
Grey  
24260 108 20 x 122 cm  
LRV: 31.03%  
Skirting: 26640 345



**Patina Ash**  
Brown  
24260 107 20 x 122 cm  
LRV: 29.79%  
Skirting: 26640 344



**Rustic Oak**  
Light Grey  
24260 124 20 x 122 cm  
LRV: 45.58%  
Skirting: 26640 373



**English Oak**  
Grege  
24260 139 20 x 122 cm  
LRV: 32.87%  
Skirting: 26640 389



**English Oak**  
Classical  
24260 141 20 x 122 cm  
LRV: 30.06%  
Skirting: 26640 391



**English Oak**  
Dark Brown  
24260 140 20 x 122 cm  
LRV: 9.16%  
Skirting: 26640 390



**Large Beech**  
Natural  
24261 142 16.66 x 100 cm  
LRV: 31.08%  
Skirting: 26640 392



**Rustic Oak**  
Natural  
24260 125 20 x 122 cm  
LRV: 35.52%  
Skirting: 26640 374



**Rustic Oak**  
Medium Grey  
24260 123 20 x 122 cm  
LRV: 21.68%  
Skirting: 26640 372



**Rustic Oak**  
Brown  
24260 127 20 x 122 cm  
LRV: 20.49%  
Skirting: 26640 375



**Soft Walnut**  
Classical  
24260 149 20 x 122 cm  
LRV: 17.24%  
Skirting: 26640 400

# iD INSPIRATION 40



**Soft Walnut**  
24260 147 20 x 122 cm  
LRV: 8.25%  
Skirting: 26640 399



**White Oak**  
24260 151 20 x 122 cm  
LRV: 53.50%  
Skirting: 26640 402



**White Oak**  
24260 152 20 x 122 cm  
LRV: 34.89%  
Skirting: 26640 403



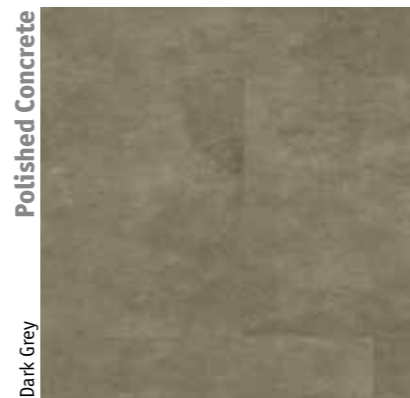
**White Oak**  
24260 153 20 x 122 cm  
LRV: 8.44%  
Skirting: 26640 404



**Polished Concrete**  
24262 075 50 x 50 cm  
LRV: 41.57%  
Skirting: 26640 319



**Polished Concrete**  
24262 076 50 x 50 cm  
LRV: 31%  
Skirting: 26640 320



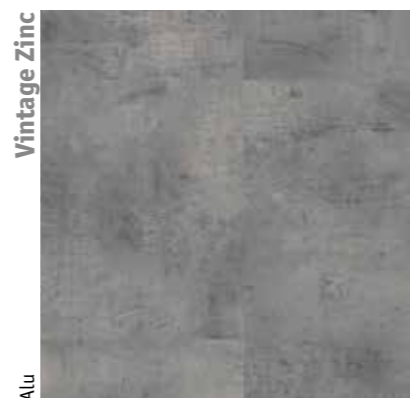
**Polished Concrete**  
24262 077 50 x 50 cm  
LRV: 17.32%  
Skirting: 26640 321



**Rock**  
24262 147 50 x 50 cm  
LRV: 39.13%  
Skirting: 26640 398



**Rock**  
24262 066 50 x 50 cm  
LRV: 34.79%  
Skirting: 26640 273



**Vintage Zinc**  
24263 150 50 x 100 cm  
LRV: 17.67%  
Skirting: 26640 401

## ACCESSORIES

### PVC DECORATIVE SKIRTING

Compact skirting with decorative film and PUR surface treatment to perfectly match all designs.

**Packaging:** 2.02lm skirting in packs of 16

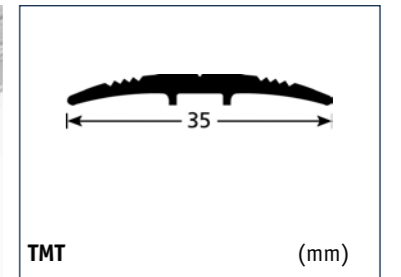


### ALUMINIUM TRANSITION PROFILE

Transition profile. To be screwed.

**2 colours:** Silver 1451 000  
Bronze 1451 001

**Packaging:** 2.7lm profiles in packs of 10

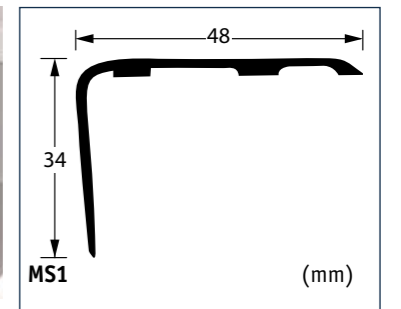


### ALUMINIUM STAIRNOSE

Stairnose. To be screwed over the floorcovering.

**1 colour:** Silver 1434 001

**Packaging:** 2.6lm profiles in packs of 10



### 3D STUD

Accessibility accessory. Ready-to-use podotactile studs to be simply fitted on top of the existing floorcovering.

**Packaging:** 5mm x 25mm stud in packs of 200



Self-adhesive		
	White	1440 050
	Grey	1440 051
	Black	1440 052
	Ivory	1440 053
	Red	1440 054
	Yellow	1440 055

# iD INSPIRATION 40

## FEATURE STRIP COLOURS

Create visual effects with contrasts of colours to highlight interior features, shape perceptions of a room size or personalise your flooring design.

BLACK	1421 001	ROYAL BLUE	1421 011
SILVER	1421 002	TOBACCO	1421 008
COPPER	1421 012	DARK GREY	1421 009
GOLD	1421 003	RED	1421 010
EGGSHELL	1421 013		



Feature strips / Dark Grey - Red

## TECHNICAL DATA

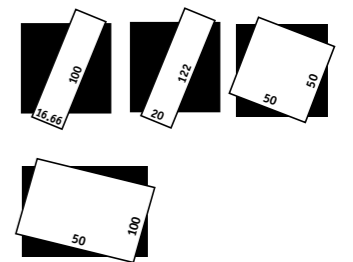
CERTIFICATION & CLASSIFICATION	STANDARDS	iD Inspiration 40
<b>Type of floor covering</b>	EN ISO 10582	Heterogeneous Compact Resilient Floorcovering
<b>Classification</b>	EN ISO 10874	Domestic: 23 Commercial: 32 Industrial: 41
TECHNICAL CHARACTERISTICS	STANDARDS	iD Inspiration 40
<b>Total thickness</b>	EN ISO 24346	2,2 mm
<b>Wear layer thickness</b>	EN ISO 24340	0,4
<b>Total weight</b>	EN ISO 23997	3700 g/m <sup>2</sup>
<b>Wear layer binder content</b>	EN ISO 10582	Type I
<b>Dimensions</b>	EN ISO 24342	
	Planks	16,66 x 100 cm, 25 planks/box = 4,17 m <sup>2</sup> 20 x 122 cm, 17 planks/box = 4,15 m <sup>2</sup>
	Tiles	50 x 50 cm, 17 tiles/box = 4,25 m <sup>2</sup> 50 x 100 cm, 8 tiles/box = 4,00 m <sup>2</sup>
<b>Surface treatment (PUR)</b>		Yes - TopCleanXP™
<b>Beveled edges</b>		No
TECHNICAL PERFORMANCES	STANDARDS	iD Inspiration 40
<b>Dimensional stability</b>	EN ISO 23999	≤ 0,10 %
<b>Curl resultant to heat</b>	EN ISO 23999	≤ 2 mm
<b>Reaction to fire</b>	EN 13501-1	B <sub>fl</sub> -s1 glued over concrete substrate B <sub>fl</sub> -s1 glued over wood substrate
<b>Residual indentation</b>	EN ISO 24343-1	≤ 0,05 mm
<b>Furniture leg</b>	EN 424	No damage
<b>Castor chair</b>	ISO 4918 - EN 425	No damage
<b>Impact sound reduction</b>	EN ISO 717-2	ΔL <sub>w</sub> = 3 dB
<b>Reduction of in-room impact noise</b>	EN ISO 31-074	Class C (L <sub>n,r,w</sub> < 85 dB)
<b>Thermal resistance</b>	EN ISO 10456	0,02 m <sup>2</sup> K/W
<b>Light fastness</b>	EN ISO 105-B02 (method 3a)	≥ 6
<b>Chemical resistance</b>	EN ISO 26987	Not affected (0)
<b>Slip resistance</b>	DIN 51130 EN 13893	R9 / R10 depending on embossing μ ≥ 0,30
<b>Electrical properties</b>	EN 1815 EN 1081	< 2 kV on concrete > 10 <sup>9</sup> Ohm
<b>Peeling resistance</b>	EN ISO 24345	≥ 50N / 50mm
<b>Underfloor heating</b>		Suitable - max. 27 °C

The above information is subject to modification for the benefit of further improvement. (07/16).  
Tarkett's instructions regarding installation, cleaning and maintenance should be observed.  
Please contact Tarkett at the address shown for these instructions.

CUSTOMS TARIFF: 482050000000F



## Logistics Information



## Surface treatment



## General Information



# FLOOR IS THE NEW PLAYGROUND

[flooristhewnewplayground.tarkett.com](http://flooristhewnewplayground.tarkett.com)

■ **WESTERN EUROPE:** Austria: Tarkett Holding GmbH, Niederlassung Wien – Tel. +43 1 47 88 062 ■ Belgium: Tarkett France Belux – Tel. +32 16 35 98 80 ■ Denmark: Tarkett A/S – Tel. +45 43 90 60 11 ■ Finland: Tarkett Oy – Tel. +358 9 4257 9000 ■ France: Tarkett SAS – Tel. +33 1 41 20 42 49 ■ Germany: Tarkett Holding GmbH, Bereich Objekt – Tel. +49 62 33 810 ■ Greece: Tarkett Monoprosopi Ltd – Tel. +30 210 6745 340 ■ Italy: Tarkett S.p.A. – Tel. +39 0744 7551 ■ Luxembourg: Tarkett GDL SA – Tel. +352 949 211 8804 ■ Netherlands: Tarkett Holding GmbH, Vestiging Nederland – Tel. +31 416 685 491 ■ Norway: Tarkett AS – Tel. +47 32 20 92 00 ■ Portugal: Tarkett SA – Tel. +351 21 427 64 20 ■ Spain: Tarkett Floors S.L – Tel. +34 91 358 00 35 ■ Sweden: Tarkett Sverige AB – Tel. +46 771 25 19 00 ■ Switzerland: Tarkett Holding GmbH, Bereich Objekt Schweiz – Tel. +41 043 233 79 24 ■ Turkey: Tarkett Aspen – Tel. +90 212 213 65 80 ■ United Kingdom: Tarkett Ltd – Tel. +44 (0) 1622 854 040 ■ **EASTERN EUROPE:** Baltic Countries: Tarkett Baltics: Tel. +370 37 262 220 ■ Czech Republic: Tarkett France SAS, org. slozka – Tel. +420-271 001 602 ■ Hungary: Tarkett France SAS – Tel. +36 1 437 8150 ■ Poland: Tarkett Polska Sp. z o.o. – Tel. +48 22 16 09 231 ■ Russian Federation: ZA0 Tarkett RUS – Tel. +7 495 775 3737 ■ Slovakia: Tarkett France SAS, org.zlozka – Tel. +421 248 291 317 ■ South East Europe: Tarkett Trade d.o.o. – Tel. +381 21 7557 649 (44) 569 12 21 ■ Ukraine: Tarkett UA – Tel. +38 (0) 44 569 12 21 ■ **ASIA AND OCEANIA:** Australia: Tarkett Australia Pty Ltd – Tel. +61 2 88 53 12 00 ■ China: Tarkett Floor Covering (Shanghai) Co. Ltd. – Tel. +86 (21) 60 95 68 38 ext 841 ■ North East Asia: Tarkett Hong Kong Limited – Tel. +852 2511 8716 ■ India: Tarkett France (India Branch) – Tel. +91 11 4352 4073 ■ South East Asia: Tarkett Flooring Singapore Pte. Ltd. – Tel. +65 6346 1585 ■ **AFRICA:** Tarkett International: Tel. +33 1 41 20 41 01 ■ **MIDDLE EAST:** Tarkett Middle East: Tel. +961 1 51 3363/4 ■ Israel: Tarkett International: Tel. +33 1 41 20 41 01 ■ **NORTH AMERICA:** USA: Tarkett Inc. – Tel. +1 713 869 5811 / Johnsonite – Tel. +1 440 543 8916 ■ Canada: Tarkett Inc. – Tel. +1 450 293 173 ■ **LATIN AMERICA:** Brazil: Tarkett – Tel. 55 12 3954 7108 ■ Argentina - Chile - Uruguay: Tarkett Latam Mercosur – Tel. +54 11 47 08 07 72 / +54 9 11 44 46 88 82 ■ Bolivia - Colombia - Ecuador - Panama - Paraguay - Peru - Trinidad and Tobago - Venezuela: Tarkett – Tel. +55 11 9 8410 9310 / +55 11 95494 0069 ■ Mexico / Central America: Tarkett Latam Mexico – Tel. +55 11 98410 9310



[www.tarkett.com](http://www.tarkett.com)